

English Study Guide Structures

Essential Question: What tools do great writers use to ensure that their novels stand above boring ones?

Overview: While finishing the *The Graveyard Book*, students will identify allusions in literature and interpret their meanings.

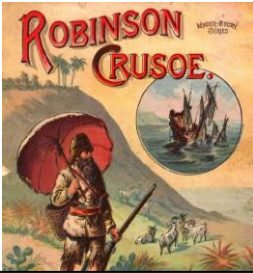
Allusions are when authors make a reference to place, person, or something that happened. It can be real or in reference to other genres or history.

At the end of this study guide you will:

L5: Demonstrate understanding of figurative language, word relationships, and nuances in word meanings. A) Interpret figures of speech (e.g. literary, biblical, and mythological allusions) in context.



The Odyssey is referenced in the beginning of *The Graveyard Book*



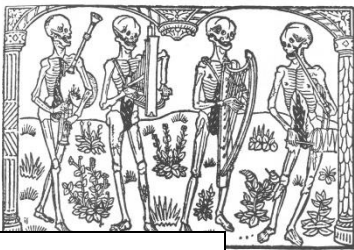
Bod reads *Robinson Crusoe* in chapter 6

Week 1 (November 28-December 2)

- _____ 1. Complete the L5 standard sheet
- _____ 2. Read to at least page 250
- _____ 3. Read at least 30 minutes of your book for your book report (at home).

Book title: _____

The title, *The Graveyard Book*, is a small reference to *The Jungle Book*



Danse Macabre. The artistic movement and song are referenced by the dead

Harry Truman: the 33rd president of the United States—and a ghoul.



