

Slope

Chapter 4 Test

Name _____

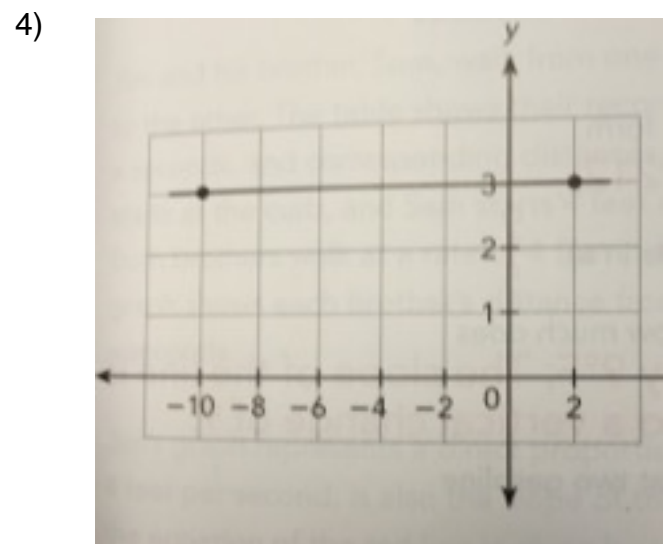
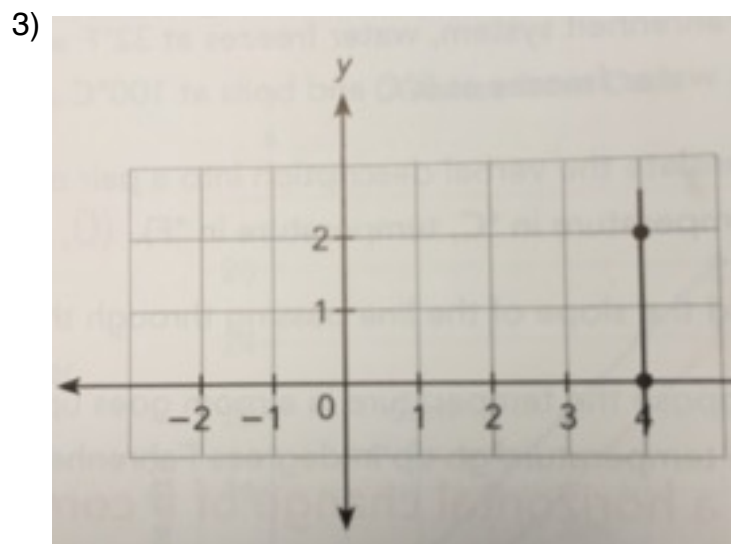
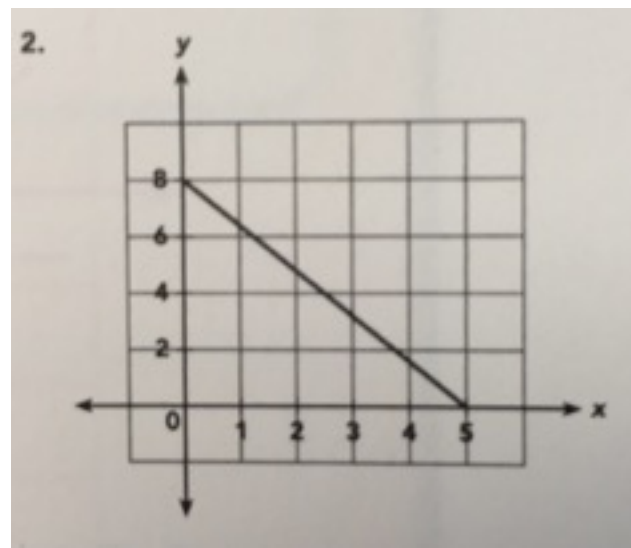
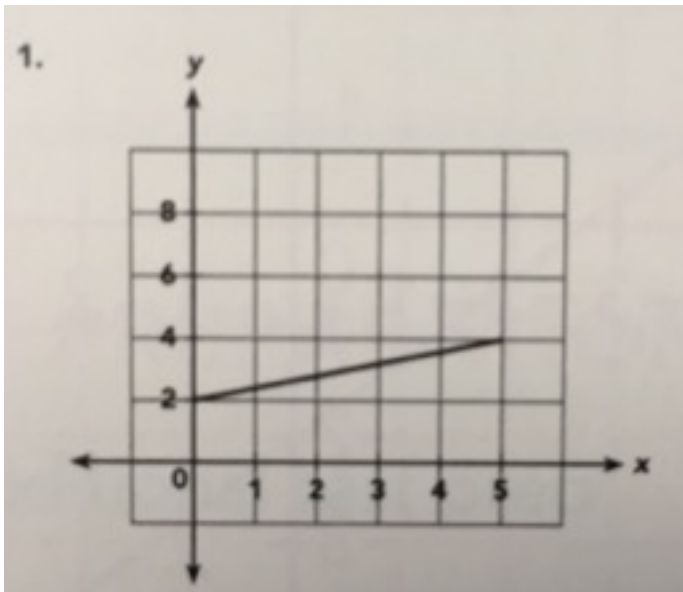
Class _____

Ms. Angie

Date _____

Show all your work and box your final answer.

Find the slope of each line.



Find the slope of the line passing through each pair of points.

4.) $(4, 8)$ $(2, 0)$

5.) $(0, 6)$ $(3, 0)$

Using the given slope and y-intercept of a line write an equation in slope-intercept form.

6.) Slope, $m = 2$
y-intercept $b = 3$

7.) Slope, $m = -3$
y-intercept, $b = 4$

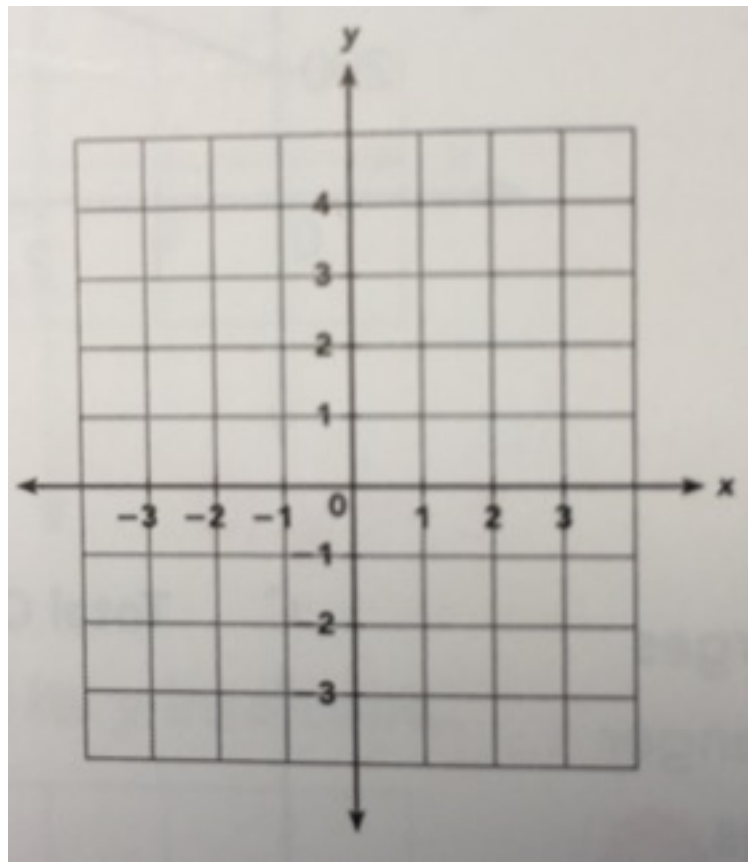
Write an equation of the line that has the given slope and passes through the given point.

7.) Slope, $m = -1$ $(0, 2)$

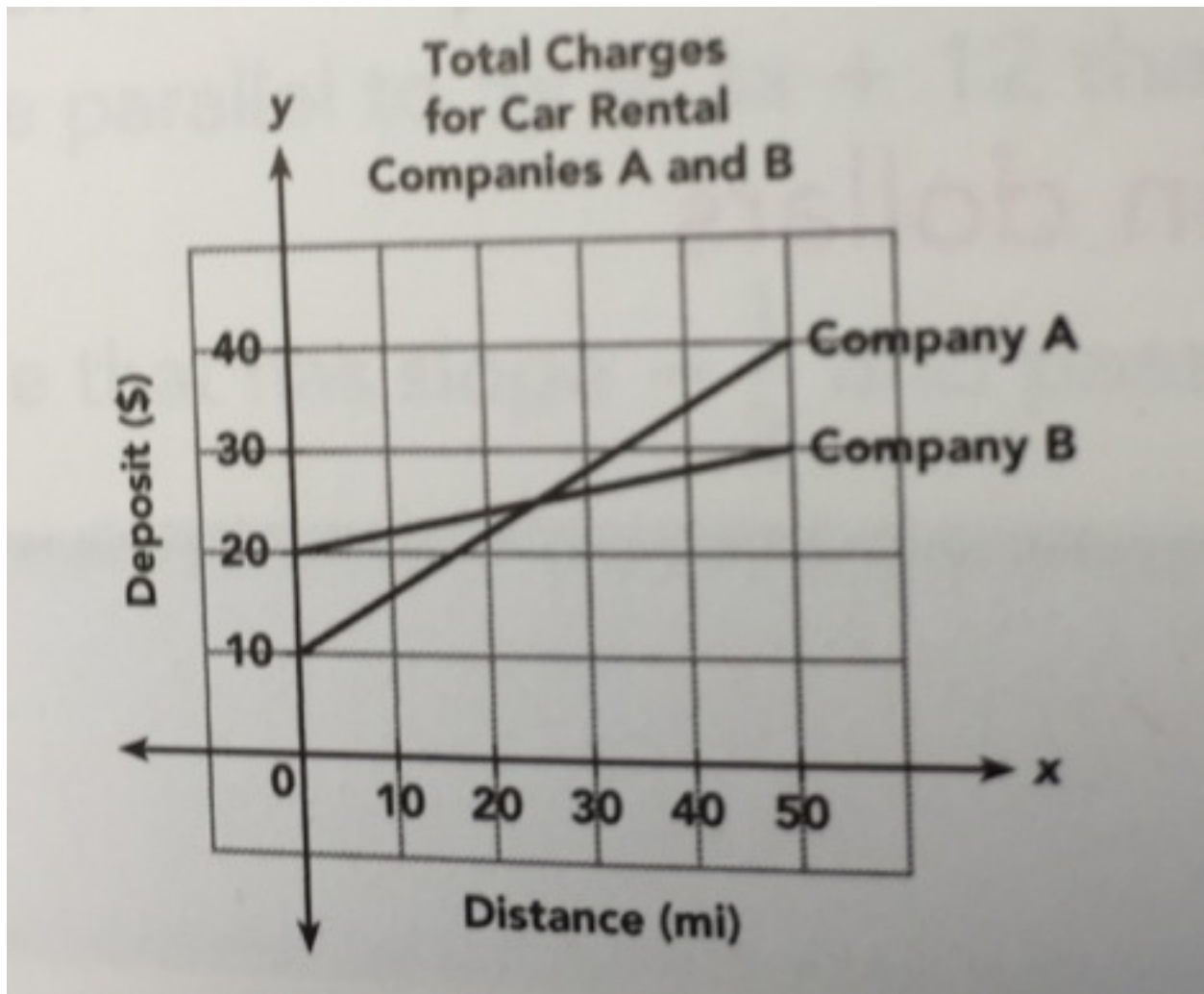
8.) Slope, $m = 1/2$; $(2, -1)$

Solve. Show your work.

9.) Graph a line with slope of -2 that passes through the point $(-1, 4)$ on the coordinate plane below.



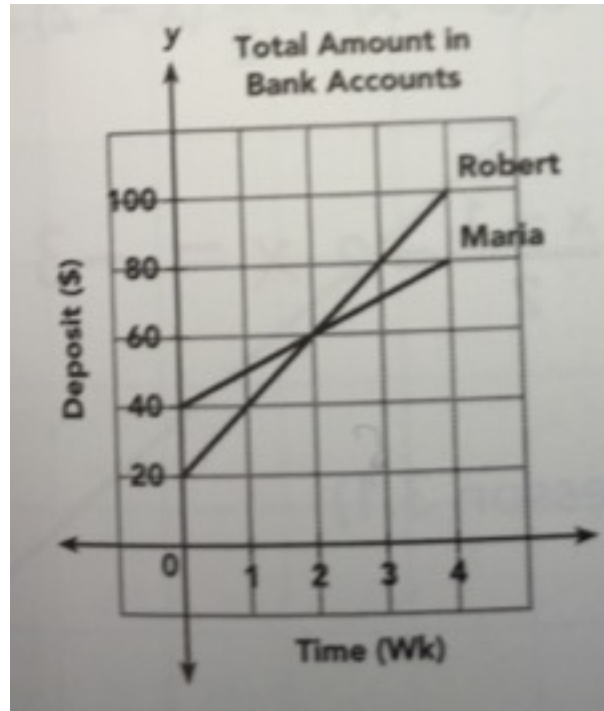
10.) Car rental companies A and B each require a deposit of D dollars, to rent a car, plus a fixed mileage charge.



a.) Find the amount each car rental company requires for the deposit

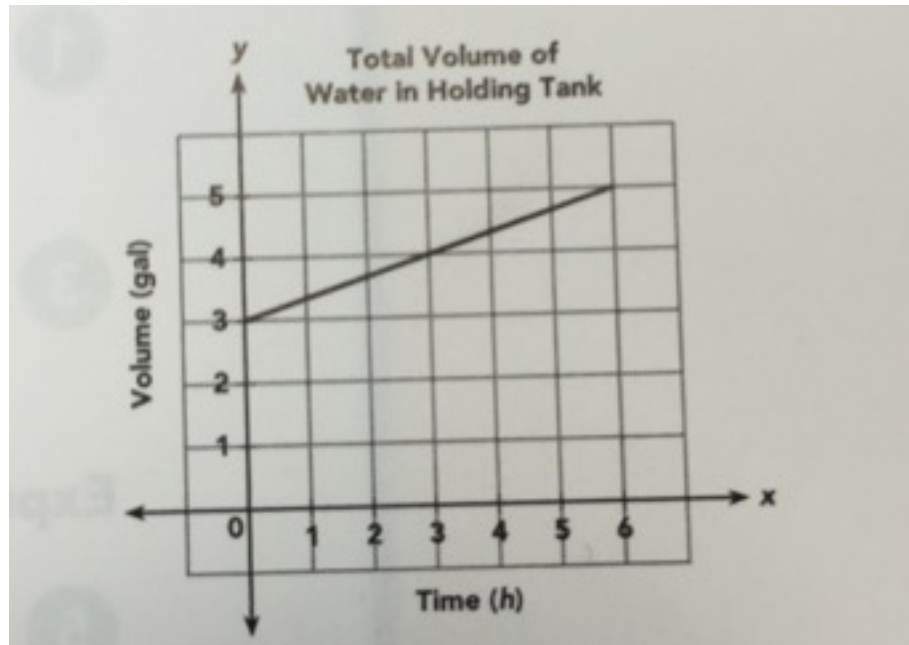
b.) Which company charges a greater amount per mile?

11.) Robert and Marie both work as chefs at a restaurant. After receiving their weekly paychecks, they each deposit a fixed amount into their respective bank accounts. the graph shows the amount of money in each of their accounts after one month.



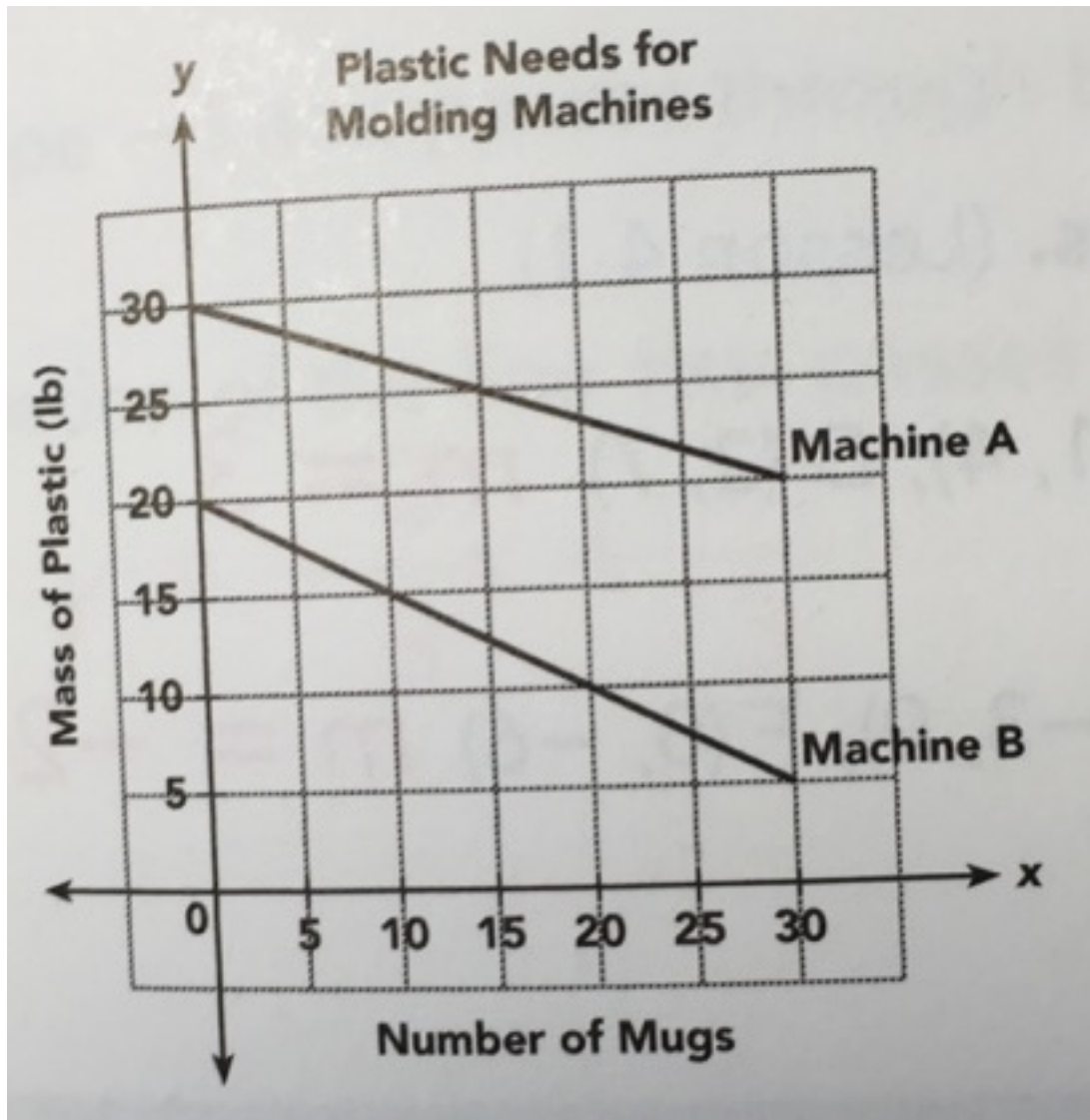
- a) Which chef deposits a greater amount of money each week into his/her account? Explain what information you used to determine your answer.
- b) In which week do the chefs have the same amount of money in their accounts?
- c) Which chef started the month with more money? How can you tell?

12) A holding tank for water is located underneath the leaking inlet valve. The tank initially contained a certain volume of water. The graph shows the total volume of water, y gallons, after x hours.



- a) Find the vertical intercept of the graph and explain what information it gives about the situation.
- b) Find the slope of the graph and explain what information it gives about the situation.
- c) If the maximum capacity of the holding tank is 4 gallons, predict approximately how many hours it will take for the tank to overflow.

BONUS : Two molding machines, A and B produce identical plastic mugs at different rates. The graph shows the mass of plastic, y pounds, needed to produce x number of mugs.



- a) At start-up, which machine requires a greater amount of plastic?
- b) Which machine depletes its plastic more quickly?
- c) Which machine uses a lesser amount of plastic per mug explain how you determined your answer.