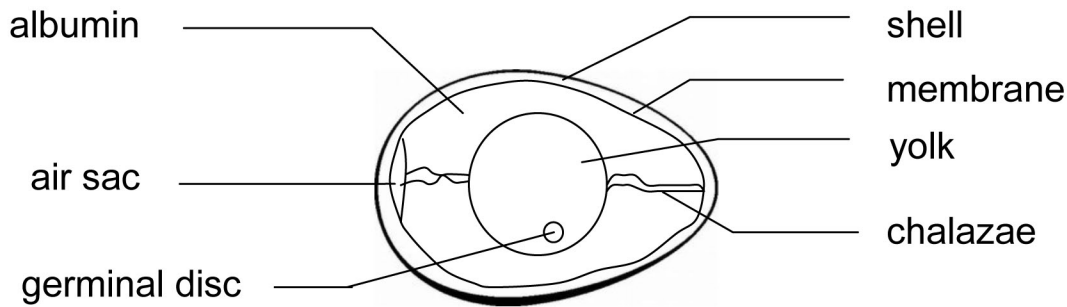


Key -- Examination of an Egg

1. What are the 4 main parts of an egg? shell, membrane, albumin and yolk.
2. Label the part of the egg in this drawing.



3. What is the purpose of the shell? This provides protection for the embryo
4. What is the purpose of the albumin? This acts like a shock absorber
5. What is the purpose of the yolk? This is the food for embryo
6. What is the purpose of the chalazae? It holds the yolk in place
7. What is the purpose of the air sac? It draws in air as it contracts when cooled
8. What is the purpose of the germinal disc? It contains the genetic material of the female

Carefully break an egg and separate the albumin (egg white) and the yolk (yellow part). Do not break the large end.

Pour the albumin into a graduated cylinder and measure the volume.

Examine the yolk. Can you see a white dot on the ball of yellow? This is